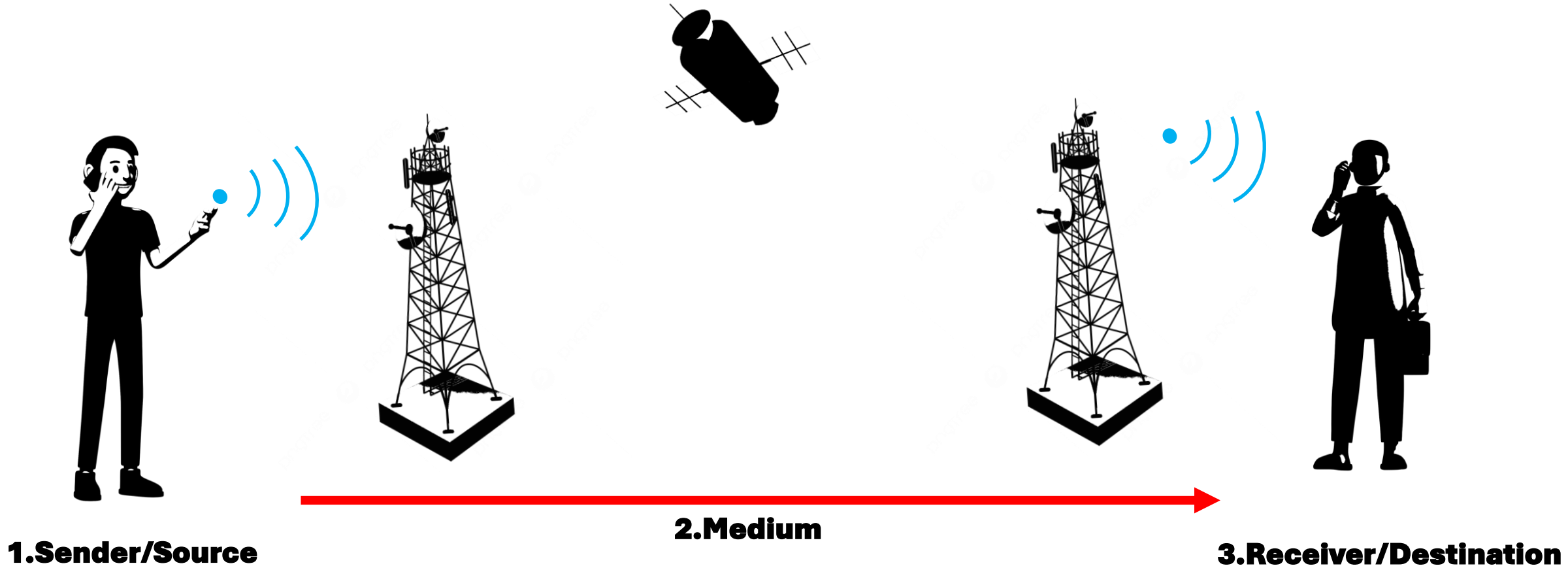


DATA COMMUNICATION

-2024 GIT SEMINAR DAY 01-

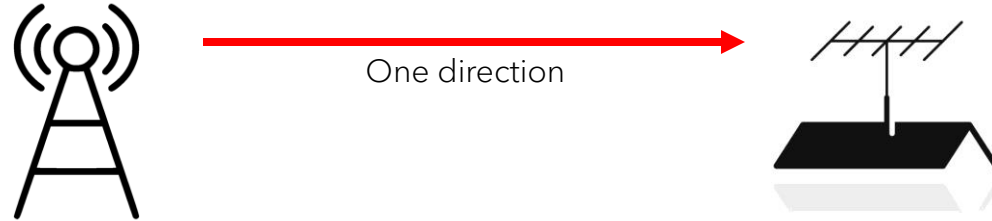


- **Basic Components in Data Communication**

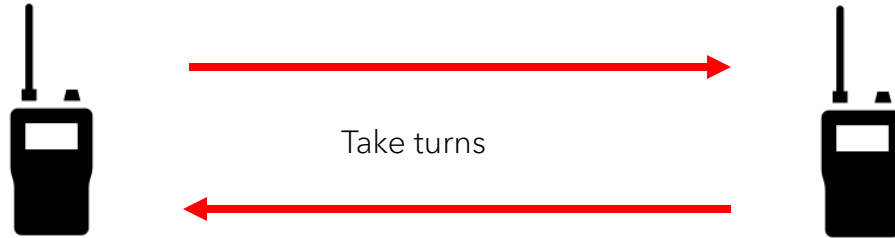


- **Data Transmission Modes**

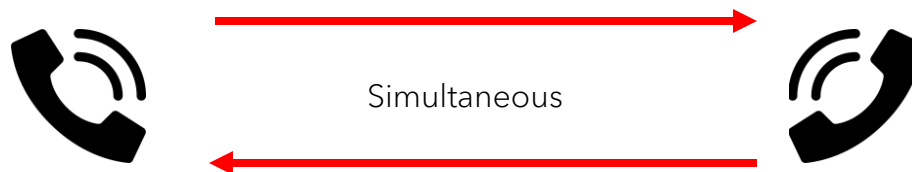
- 1. Simplex Mode**



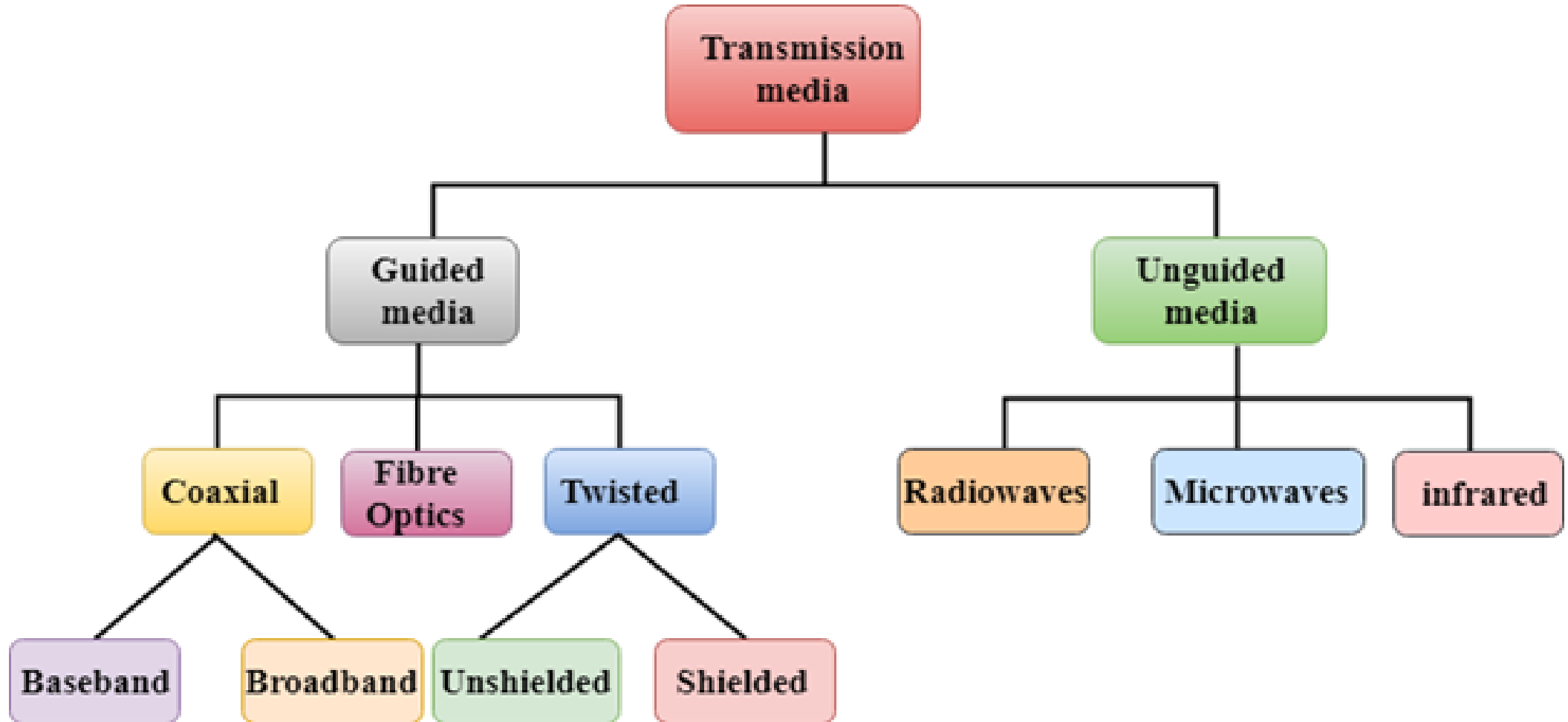
- 2. Half-Duplex Mode**



- 3. Full-Duplex Mode**



- **Data Transmission Media**

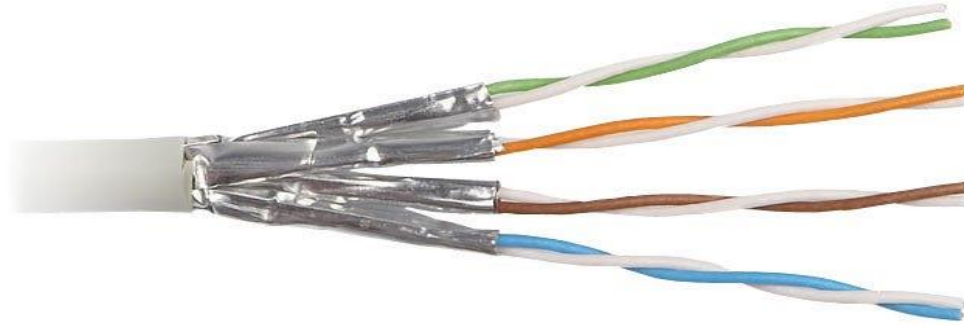


Picture 2.1

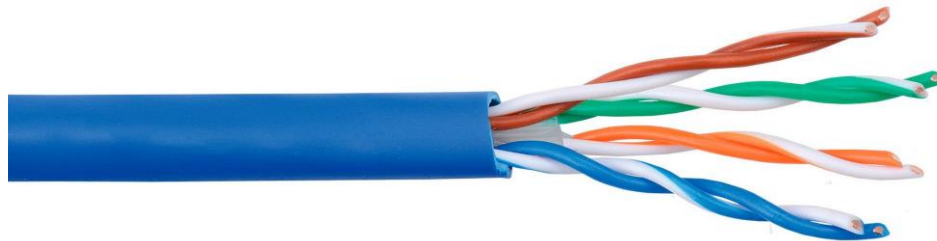
Guided Media

1. Twisted Pair

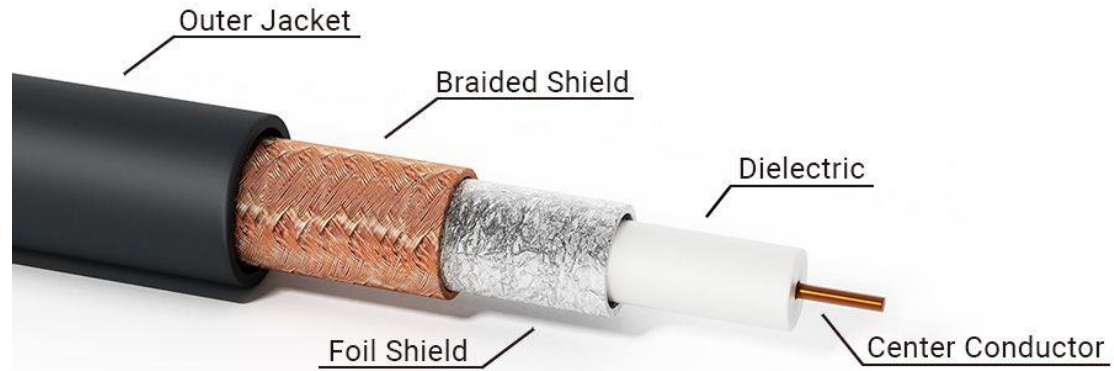
- **Shielded twisted pair (STP)**



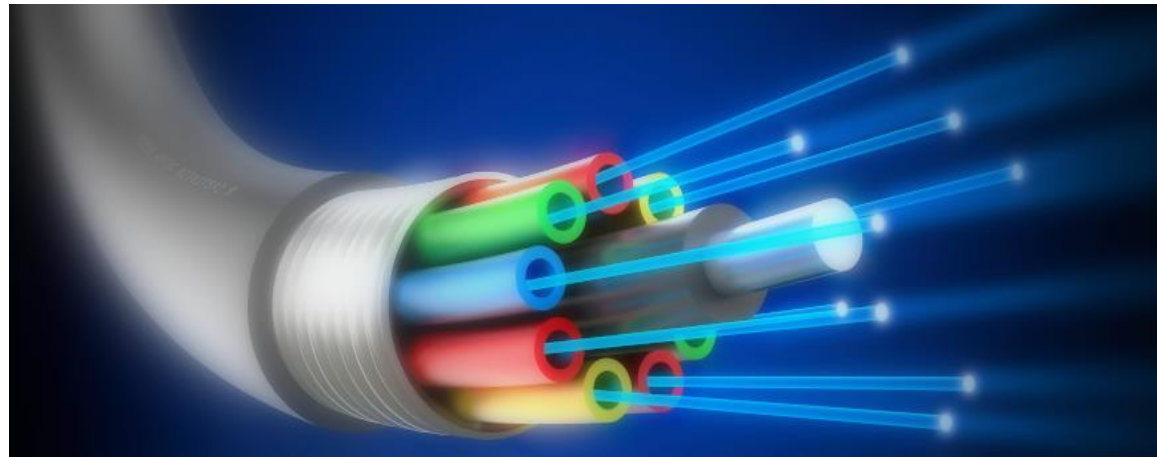
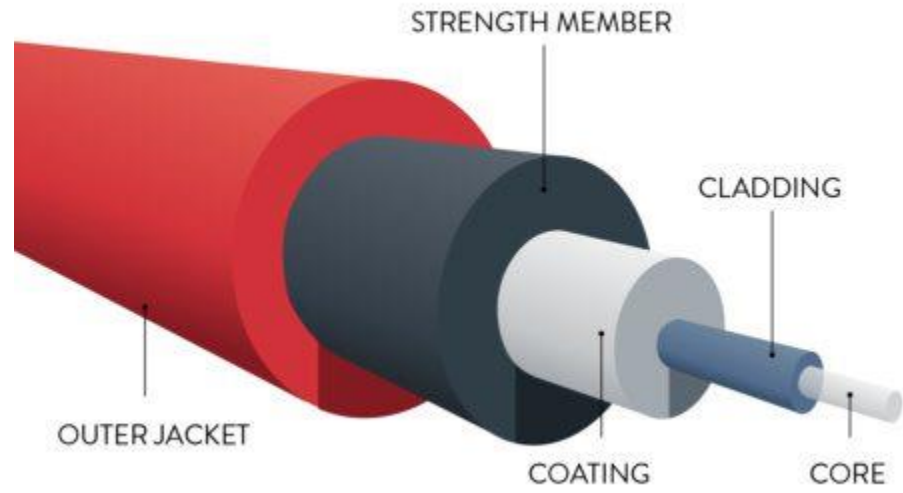
- **Unshielded twisted pair (UTP)**

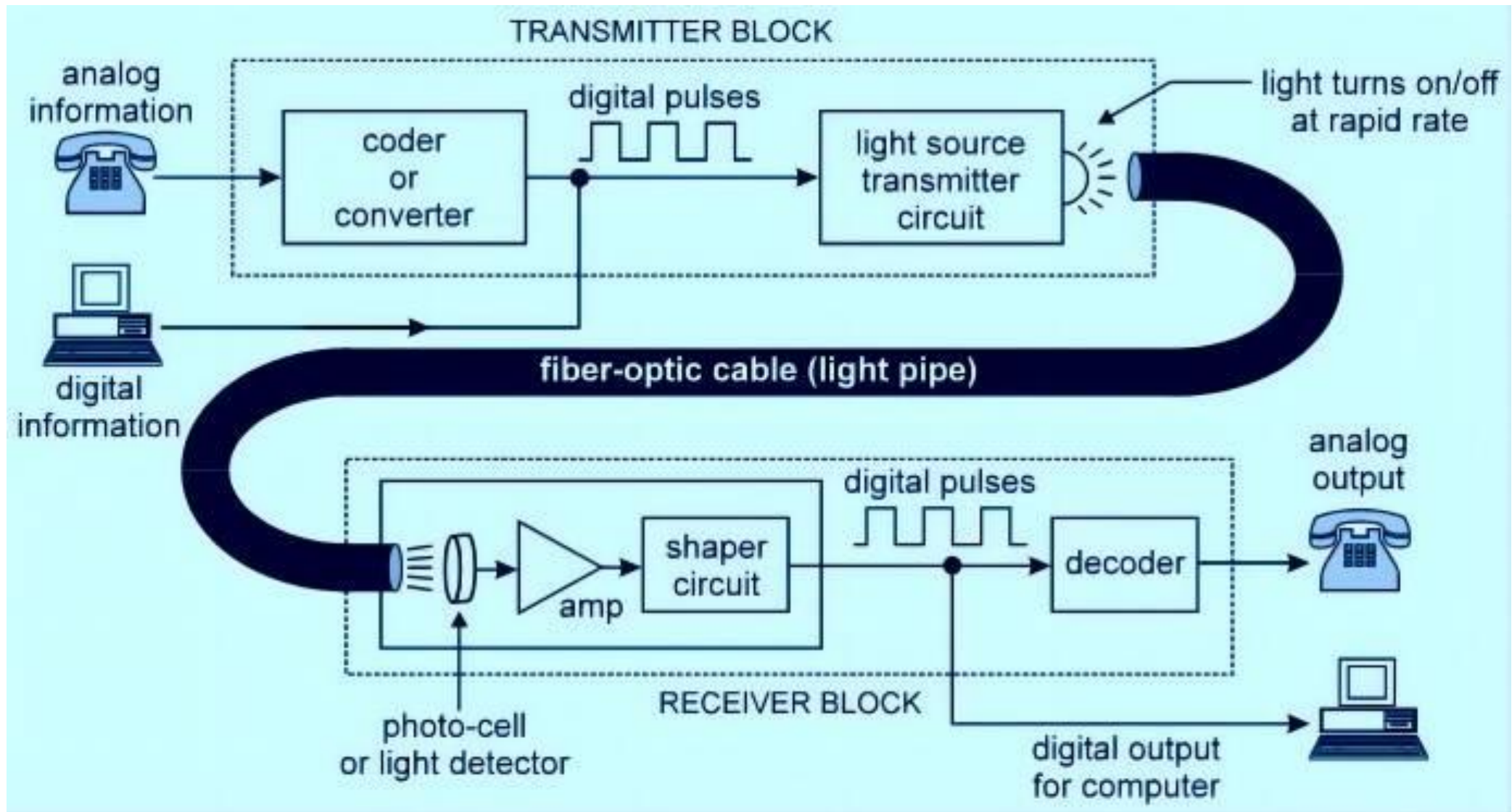


2. Coaxial Cable



3. Fiber Optic Cable



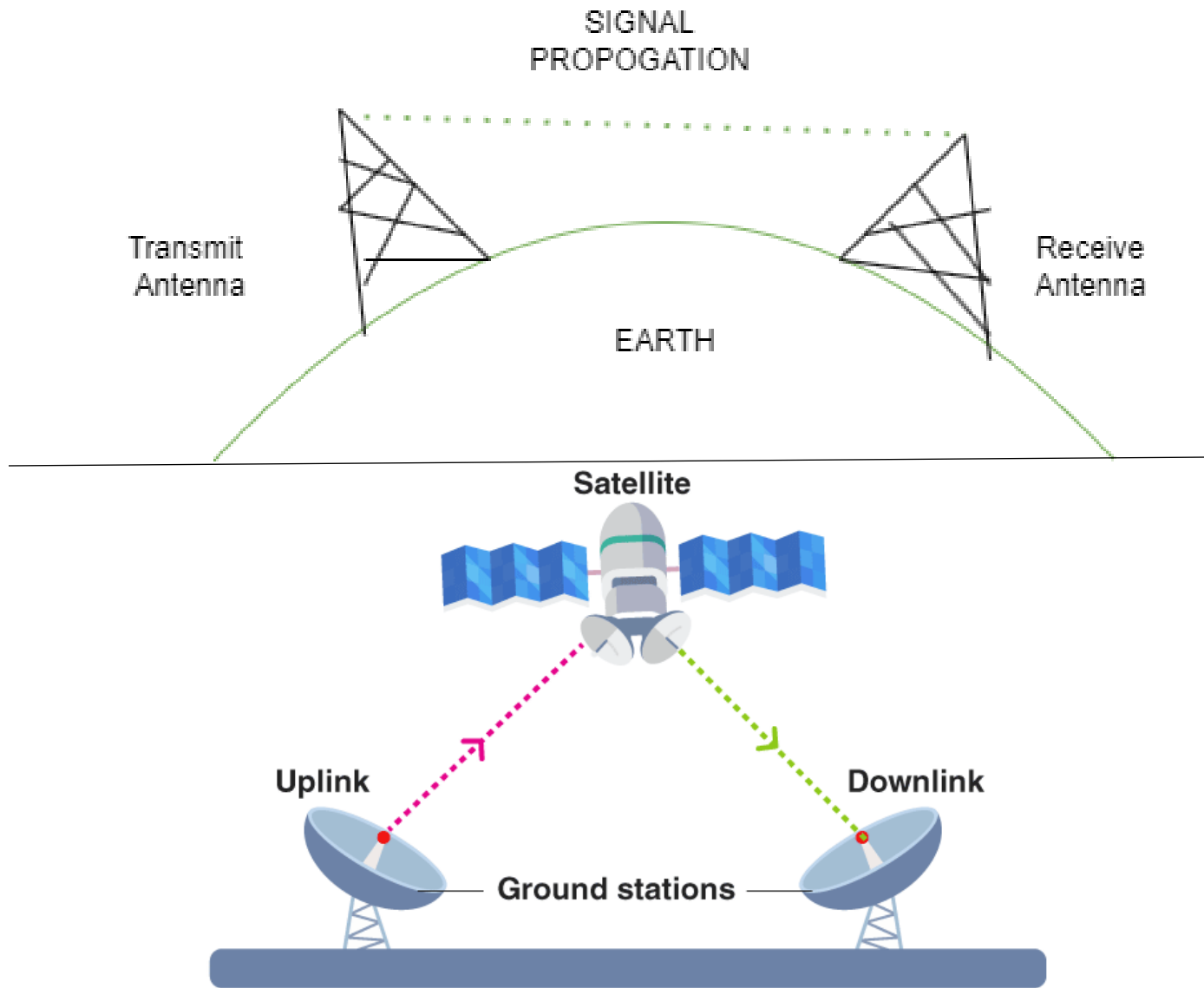


Unguided Media

1. Radio Waves

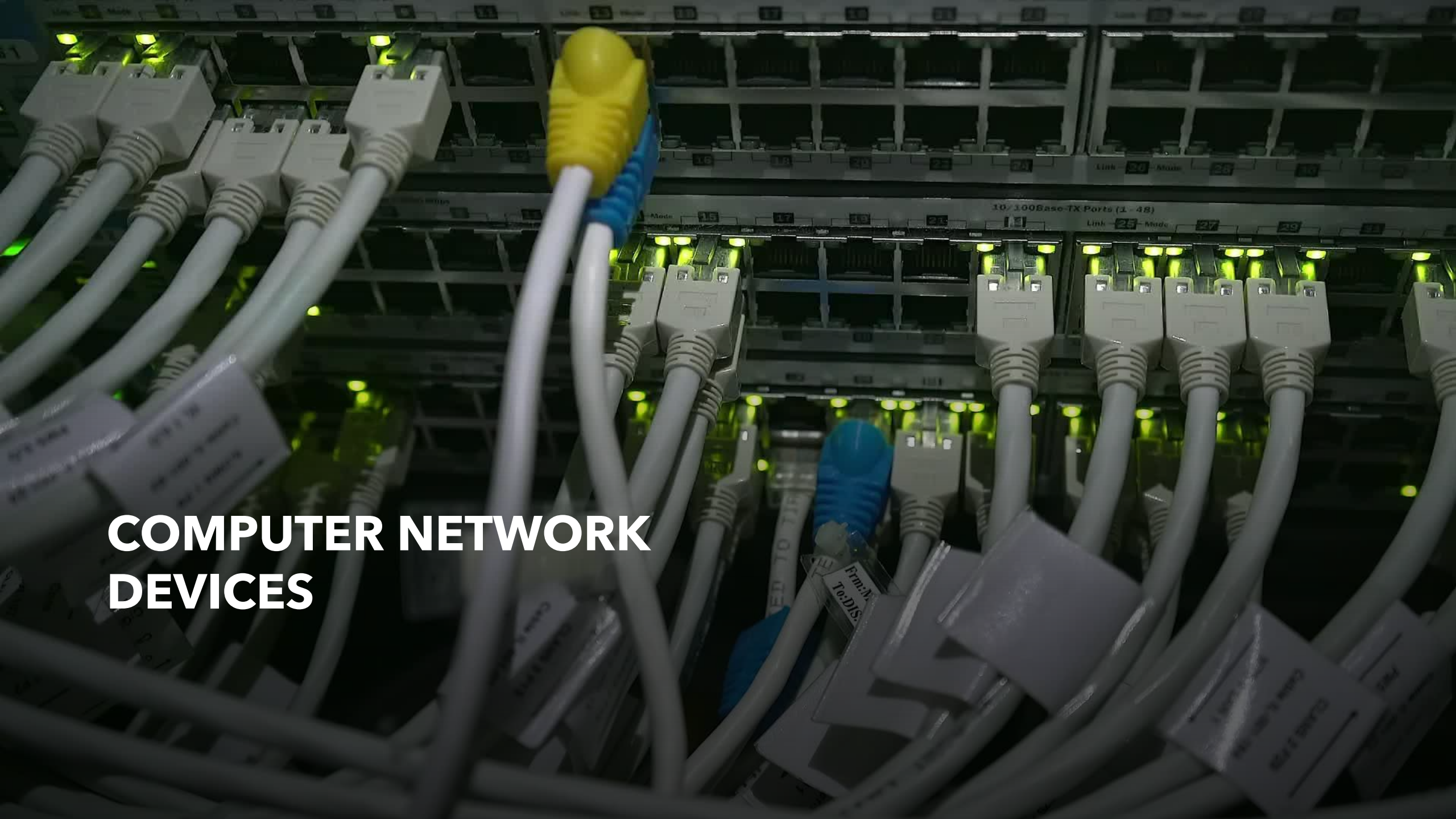


2. Microwaves



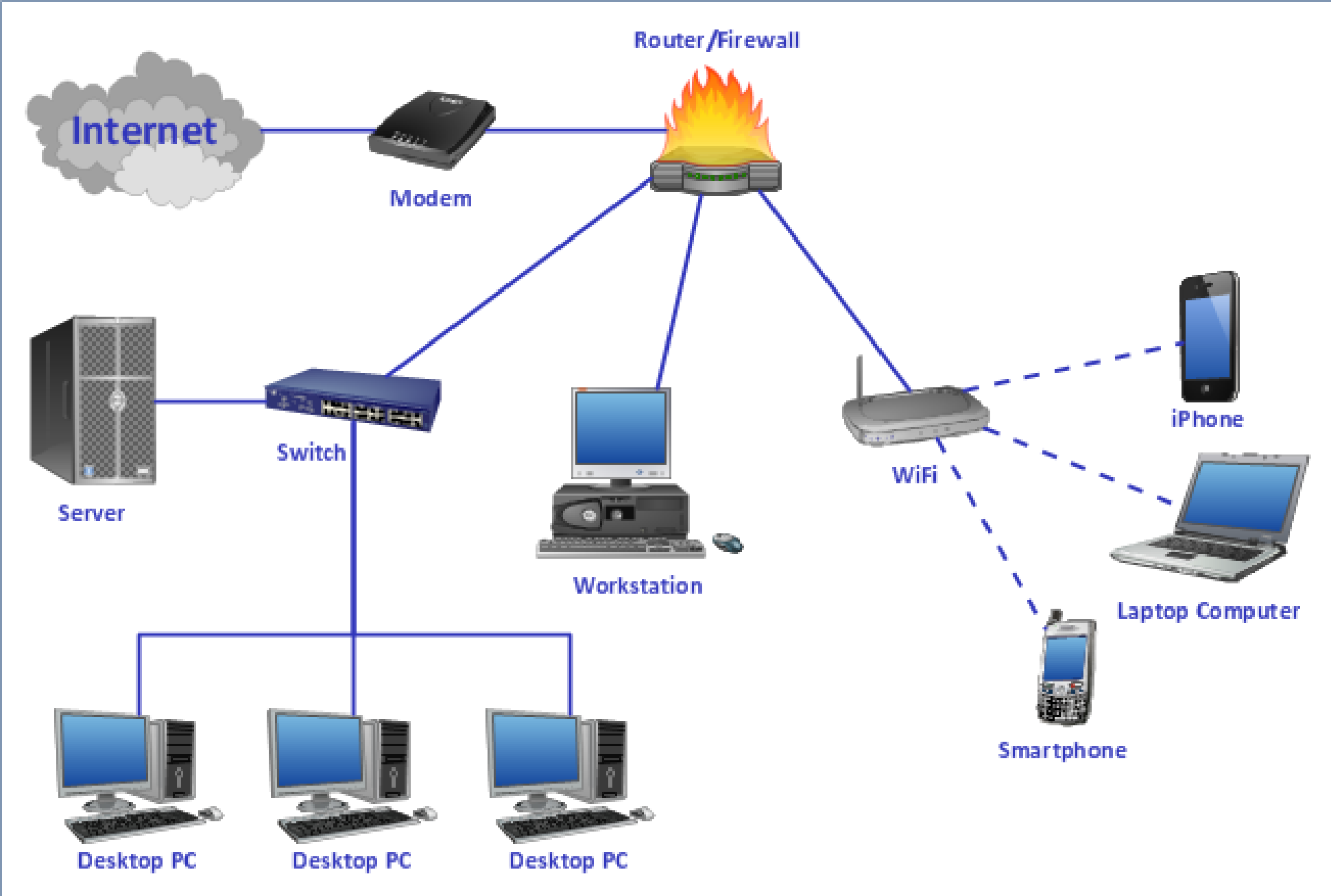
3. Infrared (IR)





COMPUTER NETWORK DEVICES

COMPUTER NETWORK



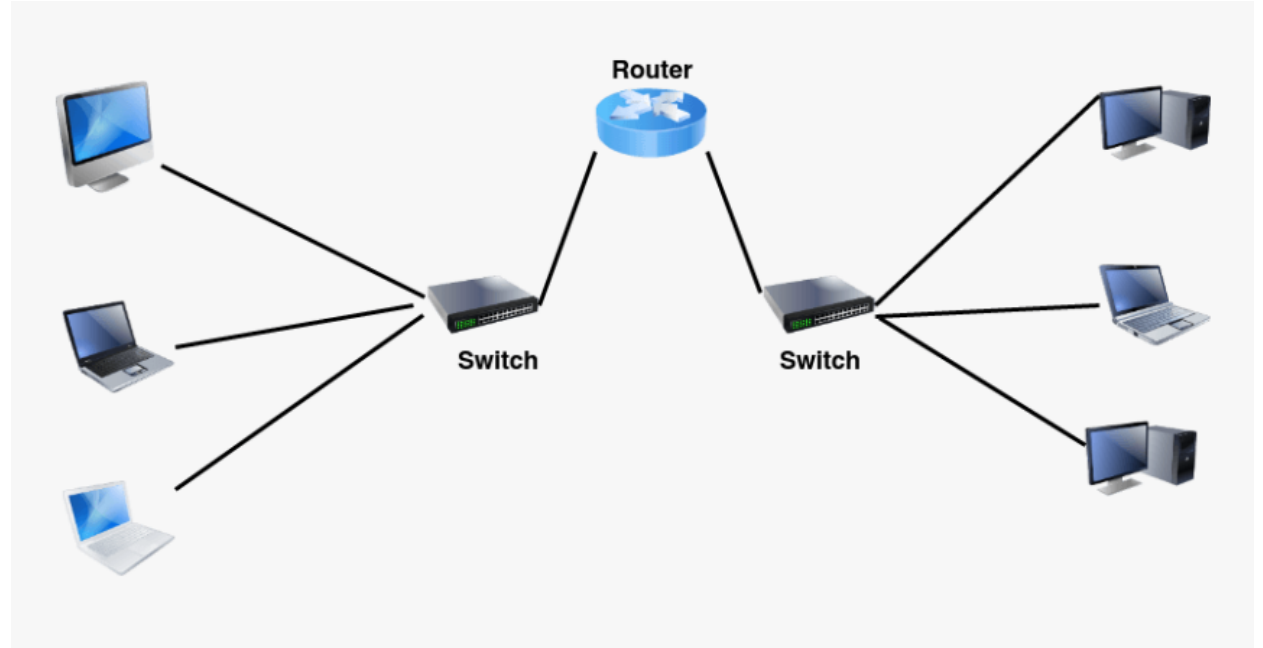
- **Network HUB**



- **Network Switch**



- **Router**

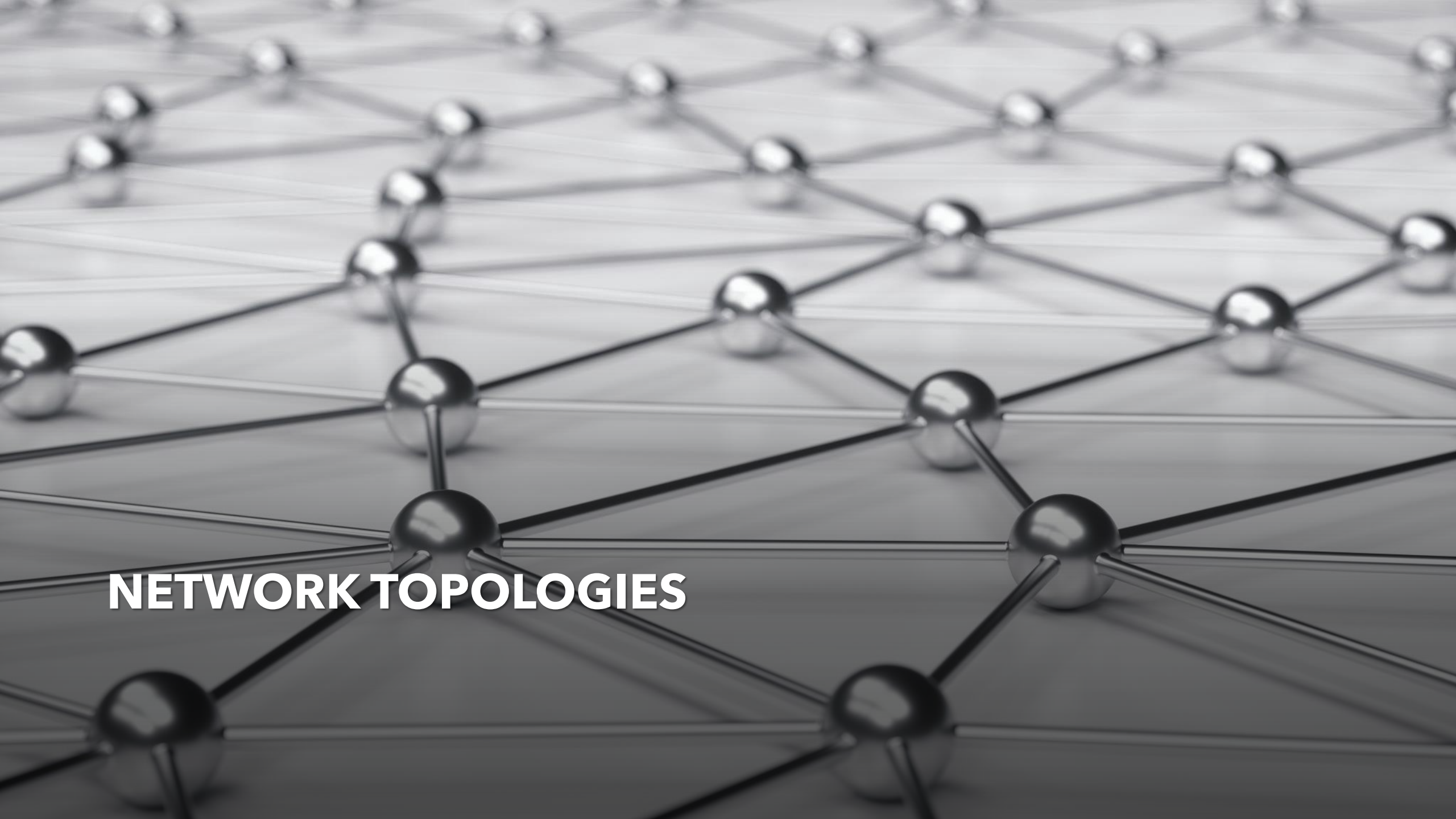


- **Modem**

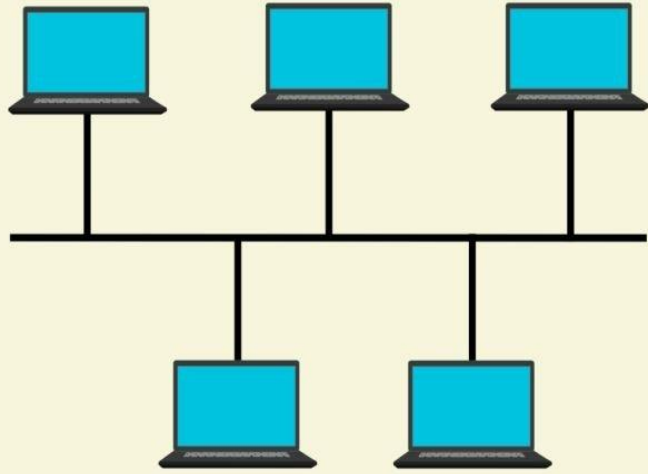


- **Network Interface Card (NIC)**

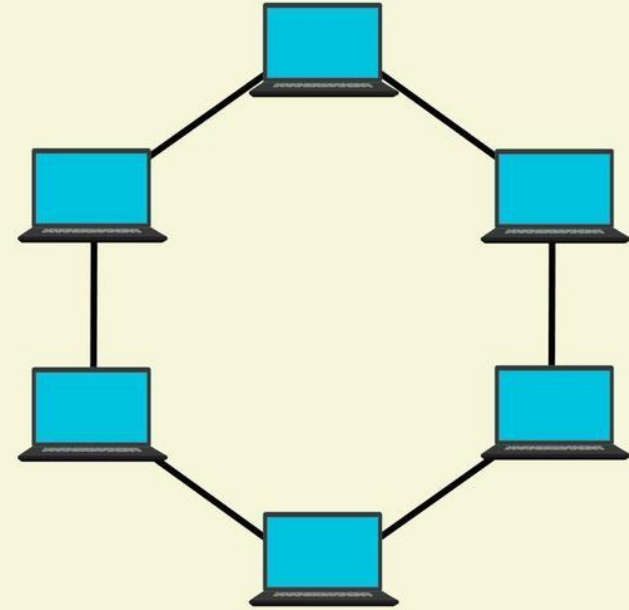




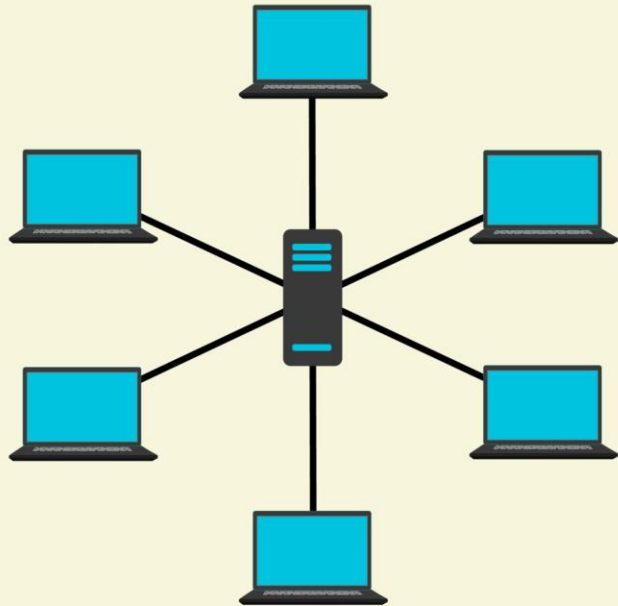
NETWORK TOPOLOGIES



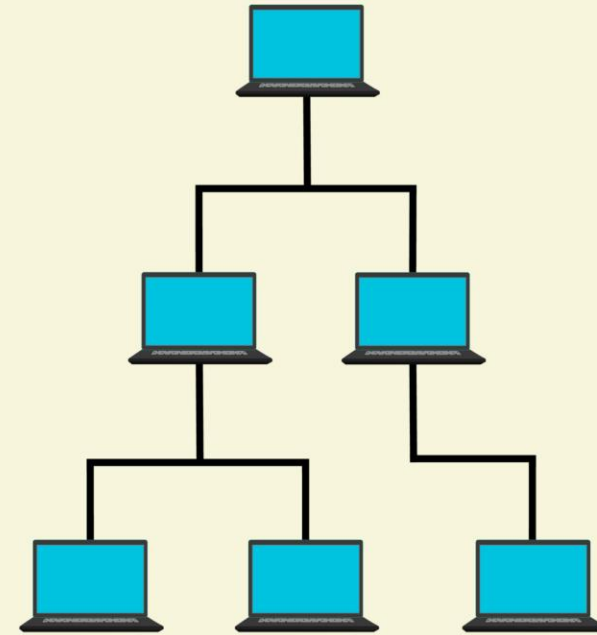
BUS TOPOLOGY



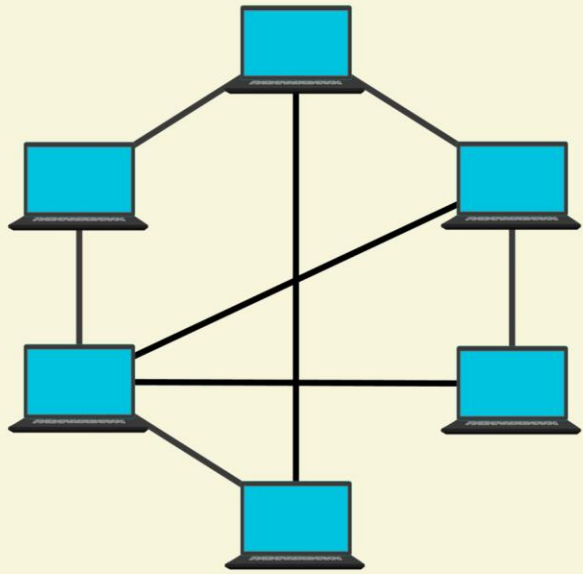
RING TOPOLOGY



STAR TOPOLOGY



TREE TOPOLOGY



MESH TOPOLOGY

Internet services



- **World Wide Web (WWW)**



- **Email**



- **Social Media**



- **Cloud Computing**



- **Cloud based services**



